

All In One POS



PT58C

Cooling Innovation for
Enhanced POS Performance

Poindus
COMPAL GROUP

Heat-Dissipation Solution

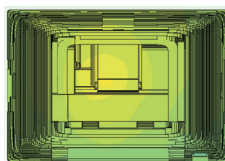
Utilize the entire back cover as a heatsink to dissipate CPU & system heat from the inside out.

Without heat-dissipation solution

System Front View



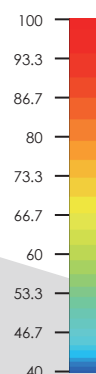
System Back View



MB



Temperature (degC)

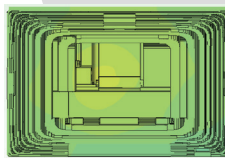


With heat-dissipation solution

System Front View



System Back View



MB

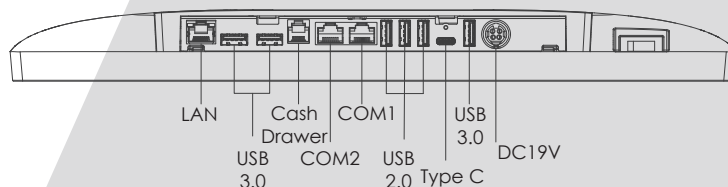


- Aluminum die-casting structure for strong & stable operation.
- Easy access/service M.2 SSD cover.
- Rubber gasket frame sealing bezel design for IP65 resistance.

- Comprehensive dual-side mounting support of peripherals.
- Innovative heat-dissipation fan-less operation design.
- 4.8mm Super Slim Edge Bezel.
- VESA 75/100 for Pole/Wall Mounting.



IO Panels (PE24/PE26)



Specification

PT58			
System	Motherboard	PE24	PE26
	Processor	Intel® Elkhart Lake Celeron®J6412 @ 2.0GHz, up to 2.60 GHz	Intel® Alder Lake-P Platform Core i5 up to 4.4 GHz Core i3 up to 4.4GHz
	Chipset	Chipset integrated	
	System Memory	1 x 8GB DDR4 SO-DIMM memory (Max. support up to 16GB)	1 x 8GB DDR5 SO-DIMM memory (Max. support up to 32GB)
	Storage Device	1x128GB M.2 SSD as standard	
	TPM	Intel F/W	
LCD Touch Panel	LCD Size	15.6" 16:9 TFT LCD	
	Brightness	250 nits	
	Resolution	1920 x 1080, Full HD	
	Touch Screen	Super slim bezel true-Flat PCAP multi-touch screen	
External I/O Ports	USB Port	3 x USB 3.1 / 3 x USB 2.0	
	COM Port	2 x COM (RJ48 connectors that support DC+0/5/12v by BIOS setting, default setting is 0v)	
	LAN Port	1 x Gigabit Ethernet by RJ-45	
	Cash Drawer	1 x RJ11 (supports 2 cash drawers), DC 24V/12V by Jumper setting	
	Type-C	1 x Type-C (DP+PD)	
	DC-Jack	1 x DC-jack with lock	
	Power Button	1	
	Audio	Internal Speaker	2 x 2W
Construction	Die-cast aluminum housing with plastic covers		
Power	LED Indicator	1 for Power LED	
	Power Adapter	65W adaptor, DC+19V	90W adaptor, DC+19V
Peripheral (USB Interface)	iButton reader / RFID reader / Fingerprint reader / 2D scanner 2x20 character LCM / 3-Track MSR USB interface / 10.1" Resolution 1280 x 800 (16:10 wide screen), USB interface		
Certificate	CE/FCC/LVD		
IP Rating	IP65 (front)		
Dimensions (W x H x D)	361.6 x 300.5 x 191.9 mm		
Environment	Operating Temperature	0 ~ 40°C	
OS Supported	Windows10 & 11 (64 bit) / Linux		

Contact

5F, No.59, Ln. 77, Xing-Ai Rd., Neihu Dist., Taipei City 114, Taiwan. R.O.C

☎ +886 2 7721 4688 📠 +886 2 7721 2289 ✉ sales@poindus.com